
Supporting pupils with medical conditions at school policy

Recommended by:	Principal
Recommendation Date:	January 2025
Ratified by:	LAGB
Signed:	
Position on the Board:	Chair of LAGB
Ratification Date:	12.03.2025
Next Review:	February 2026
Policy Tier (Central/Hub/School):	School / WHHS

Contents

1. Aims.....	3
2. Legislation and statutory responsibilities	3
3. Roles and responsibilities	4
4. Equal opportunities	5
5. Being notified that a child has a medical condition	5
6. Individual Healthcare Plans	5
7. Managing medicines.....	6
8. Emergency procedures.....	7
9. Training.....	8
10. Record keeping.....	8
11. Liability and indemnity	8
12. Complaints.....	8
13. Monitoring arrangements.....	9
14. Links to other policies	10
15. Appendices.....	11, 12, 13, 14

1. Aims

This policy aims to ensure that:

- › Pupils, staff and parents/carers understand how our school will support pupils with medical conditions
- › Pupils with medical conditions are properly supported to allow them to access the same education as other pupils, including school trips and sporting activities

The governing board will implement this policy by:

- › Making sure sufficient staff are suitably trained
- › Making staff aware of pupils' conditions, where appropriate
- › Making sure there are cover arrangements to ensure someone is always available to support pupils with medical conditions
- › Providing supply teachers with appropriate information about the policy and relevant pupils
- › Developing and monitoring Individual Healthcare Plans (IHCPs)

2. Legislation and statutory responsibilities

This policy meets the requirements under [Section 100 of the Children and Families Act 2014](#), which places a duty on governing boards to make arrangements for supporting pupils at their school with medical conditions.

It is also based on the Department for Education's statutory guidance on [supporting pupils with medical conditions at school](#). This policy also complies with our funding agreement and articles of association.

Pupils with special medical needs have the same right of admission to school as other children and cannot be refused admission or excluded from school on medical grounds alone.

Principles

Compliance with the Equality Act 2010 is consistent with the operation of the school's SEND Information Report. The school recognises its duty under the Equality Act 2010 to:

- carry out accessibility planning, removing barriers for disabled pupils to ensure access to a full curriculum.
- increase the extent to which disabled pupils can participate and achieve in the curriculum, including staff development where necessary.
- improve the physical environment of the school to enable disabled pupils, staff and visitors to take better advantage of education, benefits, facilities and services provided.
- improve the availability of accessible information to disabled pupils, staff and visitors. The school recognises and values parents and carers' knowledge of their child's disability and its effect on his/her ability to carry out normal activities and respects the parents and carers' and child's right to confidentiality.

3. Roles and responsibilities

3.1 The Governing board

The Governing board has ultimate responsibility to make arrangements to support pupils with medical conditions. The Governing board will ensure that sufficient staff have received suitable training and are competent before they are responsible for supporting children with medical conditions.

3.2 The Principal

The Principal will:

- › Make sure all staff are aware of this policy and understand their role in its implementation
- › Ensure that there is a sufficient number of trained staff available to implement this policy and deliver against all Individual Healthcare Plans (IHCPs), including in contingency and emergency situations
- › Ensure that all staff who need to know are aware of a child's condition
- › Take overall responsibility for the development of IHCPs
- › Make sure that school staff are appropriately insured and aware that they are insured to support pupils in this way
- › Contact the school nursing service in the case of any pupil who has a medical condition that may require support at school, but who has not yet been brought to the attention of the school nurse
- › Ensure that systems are in place for obtaining information about a child's medical needs and that this information is kept up to date

3.3 Staff

Supporting pupils with medical conditions during school hours is not the sole responsibility of one person. Any member of staff may be asked to provide support to pupils with medical conditions, although they will not be required to do so. This includes the administration of medicines.

Those staff who take on the responsibility to support pupils with medical conditions will receive sufficient and suitable training and will achieve the necessary level of competency before doing so.

Teachers will take into account the needs of pupils with medical conditions that they teach. All staff will know what to do and respond accordingly when they become aware that a pupil with a medical condition needs help.

3.4 Parents/carers

Parents/carers will:

- › Provide the school with sufficient and up-to-date information about their child's medical needs.
- › Be involved in the development and review of their child's IHCP and may be involved in its drafting.
- › Carry out any action they have agreed to as part of the implementation of the IHCP, e.g. provide medicines and equipment, and ensure they or another nominated adult are contactable at all times

3.5 Pupils

Pupils with medical conditions will often be best placed to provide information about how their condition affects them. Pupils should be fully involved in discussions about their medical support needs and contribute as much as possible to the development of their IHCPs. They are also expected to comply with their IHCPs.

3.6 School nurses and other healthcare professionals

Our school nursing service will notify the school when a pupil has been identified as having a medical condition that will require support in school. This will be before the pupil starts school, wherever possible. They may also support staff to implement a child's IHCP.

Healthcare professionals, such as GPs and paediatricians, will liaise with the school's nurses and notify them of any pupils identified as having a medical condition. They may also provide advice on developing IHCPs.

4. Equal opportunities

Our school is clear about the need to actively support pupils with medical conditions to participate in school trips and visits, or in sporting activities, and not prevent them from doing so.

The school will consider what reasonable adjustments need to be made to enable these pupils to participate fully and safely on school trips, visits, and sporting activities.

Risk assessments will be carried out so that planning arrangements take account of any steps needed to ensure that pupils with medical conditions are included. In doing so, pupils, their parents/carers and any relevant healthcare professionals will be consulted. Risks assessments can be accessed from the Staff Shared area.

5. Being notified that a child has a medical condition

When the school is notified that a pupil has a medical condition, the process outlined below will be followed to decide whether the pupil requires an IHCP.

The school will make every effort to ensure that arrangements are put into place within 2 weeks, or by the beginning of the relevant term for pupils who are new to our school.

See Appendix 1.

6. Individual Healthcare Plans

The Principal has overall responsibility for the development of IHCPs for pupils with medical conditions. This has been delegated to the DSL and Head of Year together with the First Aid Lead.

Plans will be reviewed at least annually, or earlier if there is evidence that the pupil's needs have changed.

Plans will be developed with the pupil's best interests in mind and will set out:

- What needs to be done
- When
- By whom

Not all pupils with a medical condition will require an IHCP. It will be agreed with a healthcare professional and the parents/carers when an IHCP would be inappropriate or disproportionate. This will be based on evidence. If there is no consensus, the Headteacher will make the final decision.

Plans will be drawn up in partnership with the school, parents/carers and a relevant healthcare professional, such as the school nurse, specialist or paediatrician, who can best advise on the pupil's specific needs. The pupil will be involved wherever appropriate.

IHCPs will be linked to, or become part of, any education, health and care (EHC) plan. If a pupil has SEN but does not have an EHC plan, the SEND will be mentioned in the IHCP.

The level of detail in the plan will depend on the complexity of the child's condition and how much support is needed. The governing board and the DSL, Head of Year and First Aid Lead will consider the following when deciding what information to record on IHCPs:

- › The medical condition, its triggers, signs, symptoms and treatments
- › The pupil's resulting needs, including medication (dose, side effects and storage) and other treatments, time, facilities, equipment, testing, access to food and drink where this is used to manage their condition, dietary requirements and environmental issues, e.g. crowded corridors, travel time between lessons
- › Specific support for the pupil's educational, social and emotional needs. For example, how absences will be managed, requirements for extra time to complete exams, use of rest periods or additional support in catching up with lessons, counselling sessions
- › The level of support needed, including in emergencies. If a pupil is self-managing their medication, this will be clearly stated with appropriate arrangements for monitoring
- › Who will provide this support, their training needs, expectations of their role and confirmation of proficiency to provide support for the pupil's medical condition from a healthcare professional, and cover arrangements for when they are unavailable
- › Who in the school needs to be aware of the pupil's condition and the support required
- › Arrangements for written permission from parents/carers and the Headteacher for medication to be administered by a member of staff, or self-administered by the pupil during school hours
- › Separate arrangements or procedures required for school trips or other school activities outside of the normal school timetable that will ensure the pupil can participate, e.g. risk assessments
- › Where confidentiality issues are raised by the parent/carer/pupil, the designated individuals to be entrusted with information about the pupil's condition
- › What to do in an emergency, including who to contact, and contingency arrangements

7. Managing medicines

Prescription and non-prescription medicines will only be administered at school:

- › When it would be detrimental to the pupil's health or school attendance not to do so **and**
- › Where we have parents/carers written consent

The only exception to this is where the medicine has been prescribed to the pupil without the knowledge of the parents/carers.

Pupils under 16 will not be given medicine containing aspirin unless prescribed by a doctor.

Anyone giving a pupil any medication (for example, for pain relief) will first check maximum dosages and when the previous dosage was taken. Parents/carers will always be informed.

The school will only accept prescribed medicines that are:

- › In-date
- › Labelled
- › Provided in the original container, as dispensed by the pharmacist, and include instructions for administration, dosage and storage

The school will accept insulin that is inside an insulin pen or pump rather than its original container, but it must be in date.

All medicines will be stored safely. Pupils will be informed about where their medicines are at all times and be able to access them immediately. Medicines and devices such as asthma inhalers, blood glucose testing meters and adrenaline pens will always be readily available to pupils and not locked away.

Medicines will be returned to parents/carers to arrange for safe disposal when no longer required.

7.1 Controlled drugs

[Controlled drugs](#) are prescription medicines that are controlled under the [Misuse of Drugs Regulations 2001](#) and subsequent amendments, such as morphine or methadone.

A pupil who has been prescribed a controlled drug may have it in their possession if they are competent to do so, but they must not pass it to another pupil to use. All other controlled drugs are kept in a secure cupboard in the school medical room and only named staff have access.

Controlled drugs will be easily accessible in an emergency and a record of any doses used and the amount held will be kept.

7.2 Pupils managing their own needs

Pupils who are competent will be encouraged to take responsibility for managing their own medicines and procedures. This will be discussed with parents/carers and it will be reflected in their IHCPs.

Pupils will be allowed to carry their own medicines and relevant devices wherever possible. Staff will not force a pupil to take a medicine or carry out a necessary procedure if they refuse, but will follow the procedure agreed in the IHCP and inform parents/carers so that an alternative option can be considered, if necessary.

7.3 Unacceptable practice

School staff should use their discretion and judge each case individually with reference to the pupil's IHCP, but it is generally not acceptable to:

- › Prevent pupils from easily accessing their inhalers and medication, and administering their medication when and where necessary
- › Assume that every pupil with the same condition requires the same treatment
- › Ignore the views of the pupil or their parents/carers
- › Ignore medical evidence or opinion (although this may be challenged)
- › Send children with medical conditions home frequently for reasons associated with their medical condition or prevent them from staying for normal school activities, including lunch, unless this is specified in their IHCPs
- › If the pupil becomes ill, send them to the school office or medical room unaccompanied or with someone unsuitable
- › Penalise pupils for their attendance record if their absences are related to their medical condition, e.g. hospital appointments
- › Prevent pupils from drinking, eating or taking toilet or other breaks whenever they need to in order to manage their medical condition effectively
- › Require parents/carers or otherwise make them feel obliged, to attend school to administer medication or provide medical support to their pupil, including with toileting issues. No parents/carers should have to give up working because the school is failing to support their child's medical needs
- › Prevent pupils from participating, or create unnecessary barriers to pupils participating in any aspect of school life, including school trips, e.g. by requiring parents/carers to accompany their child
- › Administer, or ask pupils to administer, medicine in school toilets

8. Emergency procedures

Staff will follow the school's normal emergency procedures (for example, calling 999). All pupils' IHCPs will clearly set out what constitutes an emergency and will explain what to do.

If a pupil needs to be taken to hospital, staff will stay with the pupil until the parents/carers arrives, or accompany the pupil to hospital by ambulance.

9. Training

Staff who are responsible for supporting pupils with medical needs will receive suitable and sufficient training to do so.

The training will be identified during the development or review of IHCPs. Staff who provide support to pupils with medical conditions will be included in meetings where this is discussed.

The relevant healthcare professionals will lead on identifying the type and level of training required and will agree this with the First Aid Lead who will inform the Headteacher; training will be kept up to date.

Training will:

- Be sufficient to ensure that staff are competent and have confidence in their ability to support the pupils
- Fulfil the requirements in the IHCPs
- Help staff to have an understanding of the specific medical conditions they are being asked to deal with, their implications and preventative measures
- Healthcare professionals will provide confirmation of the proficiency of staff in a medical procedure, or in providing medication.

All staff will receive training so that they are aware of this policy and understand their role in implementing it, for example, with preventative and emergency measures so they can recognise and act quickly when a problem occurs. This will be provided for new staff during their induction.

10. Record keeping

The governing board will ensure that written records are kept of all medicine administered to pupils for as long as these pupils are at the school. Parents/carers will be informed if their pupil has been unwell at school.

IHCPs are kept in a readily accessible place which all staff are aware of- Medical room, locked cupboard. They are also attached to Arbor as a linked document and in the Staff Shared Area.

11. Liability and indemnity

The governing board will ensure that the appropriate level of insurance is in place and appropriately reflects the school's level of risk.

The school has full insurance cover.

12. Complaints

Parents/carers with a complaint about their child's medical condition should discuss these directly with the Head of Year in the first instance. If the Head of Year cannot resolve the matter, they will direct parents/carers to the school's complaints procedure.

13. Monitoring arrangements

This policy will be reviewed and approved by the governing board every year.

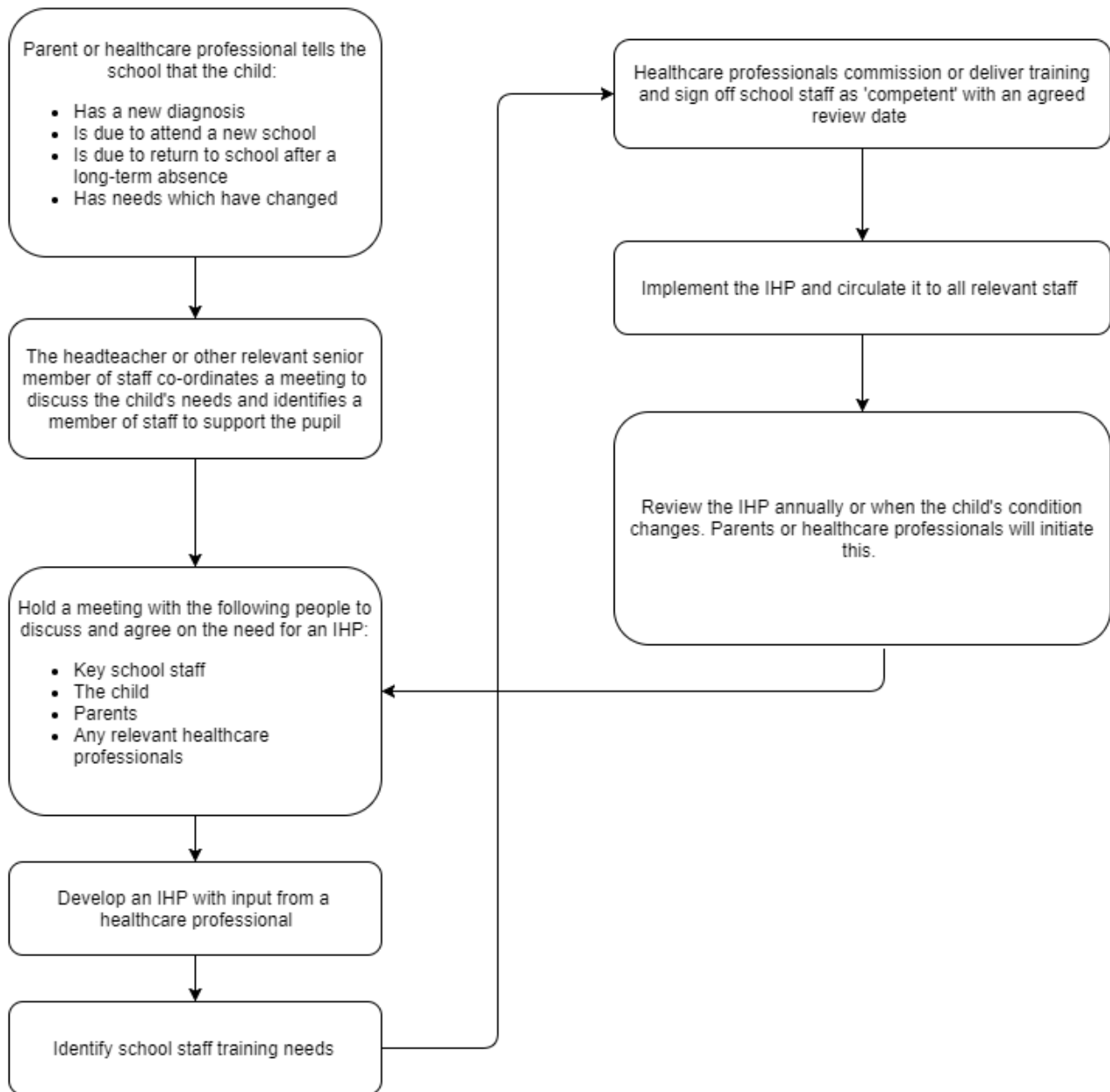
Aim	Tasks	Monitored
Our pastoral support is readily available for all pupils who may experience difficulties due to medical needs	We offer safe spaces which are accessible to all pupils, including Learning Support Centre and Sensory Room (MAB place to the specific allocated pupils)	Pastoral Team SENDCo and SLT
Offering support to enable pupils to have a personal care routines	Learn 4 Life programme supports pupils with personal care routines	Stakeholder voice (pupils, parents and carers) (SLT)
All staff engage in appropriate training around medical conditions appropriate to pupil needs	All staff engage in appropriate training around medical conditions appropriate to pupil needs: such as epilepsy, asthma, diabetes	CPD programme (SLT)

14. Links to other policies

This policy links to the following policies:

- Accessibility plan
- Complaints
- Equality information and objectives
- First Aid
- Health and Safety
- Safeguarding
- Special Educational Needs and Disabilities Information Report
- CRST - SEND Policy

Appendix 1: Being notified a child has a medical condition



Appendix 2: Example of Individual Health Care Plan:



Individual Healthcare Plan

Name of school/setting	
Child's name	
Group/class/form	
Date of birth	
Child's address	
Medical diagnosis or condition	
Date	
Review date	

Family Contact Information

Name	
Phone no. (work)	
(home)	
(mobile)	
Name	
Relationship to child	
Phone no. (work)	
(home)	
(mobile)	

Clinic/Hospital Contact

Name	
Phone no.	

G.P.

Name	
Phone no.	

Who is responsible for providing support in

school

Describe medical needs and give details of child's symptoms, triggers, signs, treatments, facilities, equipment or devices, environmental issues etc

Name of medication, dose, method of administration, when to be taken, side effects, contra-indications, administered by/self-administered with/without supervision

Daily care requirements

Specific support for the pupil's educational, social and emotional needs

Arrangements for school visits/trips etc

Other information

Describe what constitutes an emergency, and the action to take if this occurs

Who is responsible in an emergency (*state if different for off-site activities*)

Plan developed with

Staff training needed/undertaken – who, what, when

Form copied to

Appendix 3: Training on health needs per academic year

1. Asthma and Anaphylaxis; whole school training
2. Diabetes is delivered bespoke to key staff for individual student's plans and to all staff
3. Epilepsy; whole school training
4. Visual Impairment